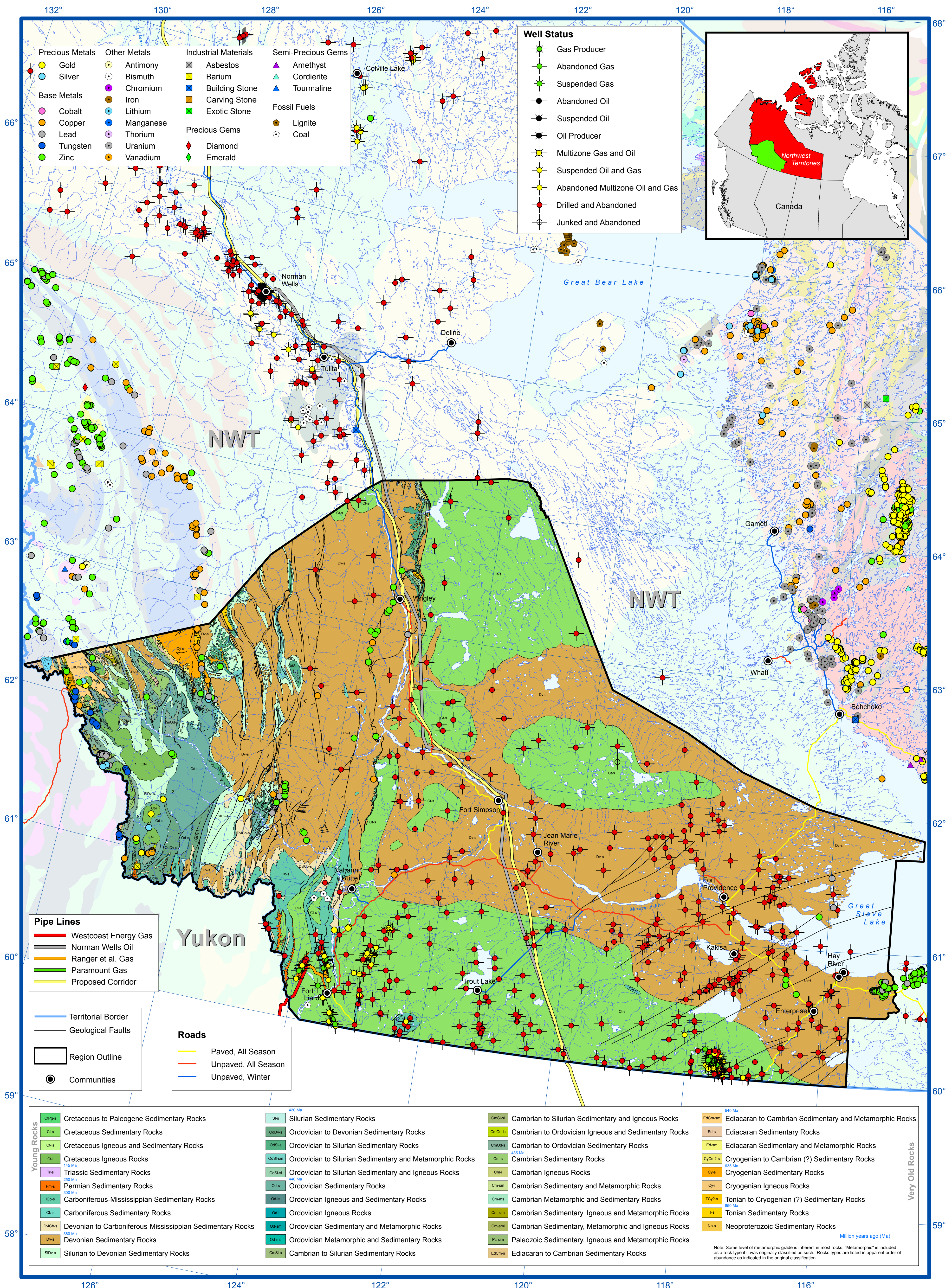




# Mineral Showings, Petroleum Wells and Generalized Geology of the Dehcho Region



**Pipe Lines**

- Westcoast Energy Gas
- Norman Wells Oil
- Ranger et al. Gas
- Paramount Gas
- Proposed Corridor

**Roads**

- Paved, All Season
- Unpaved, All Season
- Unpaved, Winter

**Young Rocks**

- CpPg-s Cretaceous to Paleogene Sedimentary Rocks
- Cs-s Cretaceous Sedimentary Rocks
- Cs-is Cretaceous Igneous and Sedimentary Rocks
- Cis Cretaceous Igneous Rocks
- Tri-s Triassic Sedimentary Rocks
- Perm-s Permian Sedimentary Rocks
- ICb-s Carboniferous-Mississippian Sedimentary Rocks
- Cb-s Carboniferous Sedimentary Rocks
- DvCb-s Devonian to Carboniferous-Mississippian Sedimentary Rocks
- Dv-s Devonian Sedimentary Rocks
- SilDv-s Silurian to Devonian Sedimentary Rocks

**420 Ma**

- Sis Silurian Sedimentary Rocks
- OrdDv-s Ordovician to Devonian Sedimentary Rocks
- OrdOds-s Ordovician to Silurian Sedimentary Rocks
- OrdS-sm Ordovician to Silurian Sedimentary and Metamorphic Rocks
- OrdOds-si Ordovician to Silurian Sedimentary and Igneous Rocks
- OrdOds Ordovician Sedimentary Rocks
- OrdOds-si Ordovician Igneous and Sedimentary Rocks
- OrdOds-si Ordovician Igneous Rocks
- OrdOds-si Ordovician Sedimentary and Metamorphic Rocks
- OrdOds-si Ordovician Metamorphic and Sedimentary Rocks
- OrdOds-si Cambrian to Silurian Sedimentary Rocks

**485 Ma**

- CmS-si Cambrian to Silurian Sedimentary and Igneous Rocks
- CmOds-si Cambrian to Ordovician Igneous and Sedimentary Rocks
- Cm-s Cambrian to Ordovician Sedimentary Rocks
- Cm-s Cambrian Sedimentary Rocks
- Cm-si Cambrian Igneous Rocks
- Cm-sm Cambrian Sedimentary and Metamorphic Rocks
- Cm-ms Cambrian Metamorphic and Sedimentary Rocks
- Cm-sm-si Cambrian Sedimentary, Igneous and Metamorphic Rocks
- Cm-sm-si Cambrian Sedimentary, Metamorphic and Igneous Rocks
- Pz-sm Paleozoic Sedimentary, Igneous and Metamorphic Rocks
- EdCm-s Ediacaran to Cambrian Sedimentary Rocks

**540 Ma**

- EdCm-sm Ediacaran to Cambrian Sedimentary and Metamorphic Rocks
- Ed-s Ediacaran Sedimentary Rocks
- Ed-sm Ediacaran Sedimentary and Metamorphic Rocks
- CyCm-s Cryogenian to Cambrian (?) Sedimentary Rocks
- Cy-s Cryogenian Sedimentary Rocks
- Cy-i Cryogenian Igneous Rocks
- Tcy-s Tonian to Cryogenian (?) Sedimentary Rocks
- Ts Tonian Sedimentary Rocks
- Ne-s Neoproterozoic Sedimentary Rocks

**Very Old Rocks**

Note: Some level of metamorphic grade is inherent in most rocks. "Metamorphic" is included as a rock type if it was originally classified as such. Rocks types are listed in apparent order of abundance as indicated in the original classification.

Data for this poster were derived or modified from the following sources:

GeoBase  
2015: <http://www.geobase.ca>

National Energy Board  
2015: 444 Seventh Avenue S.W.  
Calgary, Alberta T2P 0X8  
<http://www.nerb.gc.ca>  
(via geOLOGIC Systems - GeoScout software)

NORMIN DB  
2015: Database of Mineral Showings for the Northwest Territories; Northwest Territories Geological Survey

Survey  
P.O. Box 1320, 4601-B 52nd Ave  
Yellowknife, NT X1A 2L9  
<http://www.nwtgscience.ca/>  
NWT (s) Shared Services Centre for Lands, Environment and Natural Resources, Industry, Tourism and Investment  
2nd Floor Gallery Building  
4923 - 52nd Street  
Yellowknife, NT X1A 3S8  
gnwtmaps\_admin@govnt.ca  
Okulitch, A. V. and Irwin, D., 2014: Geological Compilation of the Western Mainland and Southern

Arctic Islands Regions, Northwest Territories; Northwest Territories Geological Survey, NWT Open File 2014-01, ESRI® digital files.

Background Geology Map:  
Wheeler, J.O., Hoffman, P.F., Card, K.D., Davidson, A., Sanford, B.V., Okulitch, A.V., and Roest, W.R. (comp.)  
1997: Geological Map of Canada; Geological Survey of Canada, Map D1860A. (background)

GNWT Lambert Conformal Conic  
Datum: North American Datum 1983; Spheroid: GRS 1980;  
Projection Lambert Conformal Conic False Easting: 0.000000; False Northing: 0.000000;  
Central Meridian: -112.000000; Standard Parallel 1: 62.000000; Standard Parallel 2: 70.000000;  
Scale Factor: 1.000000; Latitude of Origin: 0.000000

0 20 40 80 120 160  
Kilometres

**NORTHWEST TERRITORIES  
GEOLOGICAL SURVEY**

The Northwest Territories Geological Survey accepts no responsibility for any errors, inaccuracies and/or omissions in this data. Users wishing to rely upon this information should consult directly with the original source of the information.

Recommended Citation:  
Irwin, D., 2016: Mineral Showings, Petroleum Wells and Generalized Geology of the Dehcho Region; Northwest Territories Geological Survey, NWT Open Report 2016-005. 1 poster in Adobe® PDF format

Government of  
Northwest Territories